

GENERAL ARRANGEMENT

REVISIONS:

REV A 31/08/22 UTILITY LAYOUT UPDATED

NOTES:

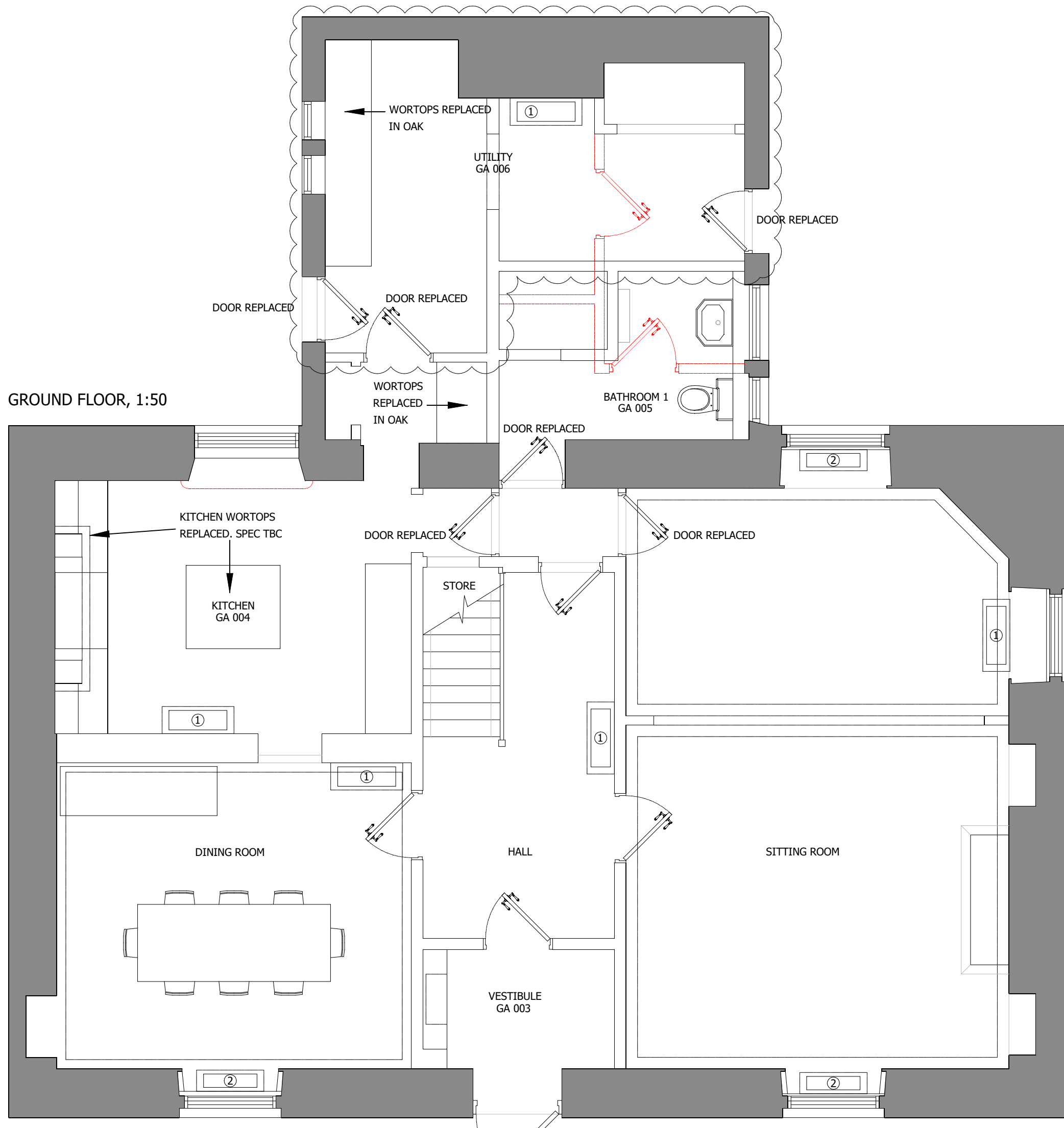
TO BE READ IN CONJUNCTION WITH SMALL POWER AND LIGHTING LAYOUTS, FLOOR FINISHES LAYOUTS, WALL FINISHES LAYOUTS AND RELEVANT DETAILS.

ALL EXISTING RADIATORS REPLACED AS PER PLUMBERS SCHEDULE:

HAN103 WALL STAYS

REPLACEMENT DOORS TO VISUALLY MATCH EXISTING DOOR FROM MAIN HALL AT GROUND FLOOR.

GROUND FLOOR, 1:50



INFORMATION GA 001 A

ALDOURIE CASTLE LIMITED
TIGH NA COILLE
PROPOSED GROUND FLOOR

DRAWN:	DATE:	SCALE:	CHECKED:
AK	APR 2022	1:50@A3	RK



WildLand Limited,
Kinrara House, Kinrara,
Aviemore PH22 1QA

Drawings to be read in conjunction with all other General Arrangement drawings, specifications, Structural, Mechanical & Electrical Engineer drawings. Drawings not to be scaled. The accuracy of electronic copies is unwarranted by Wildland Ltd.

GENERAL ARRANGEMENT

REVISIONS:

REV A 31/08/22 BEDROOM 3&4 LAYOUT UPDATED. DOUBLE DOOR ADDED TO DAY ROOM

NOTES:

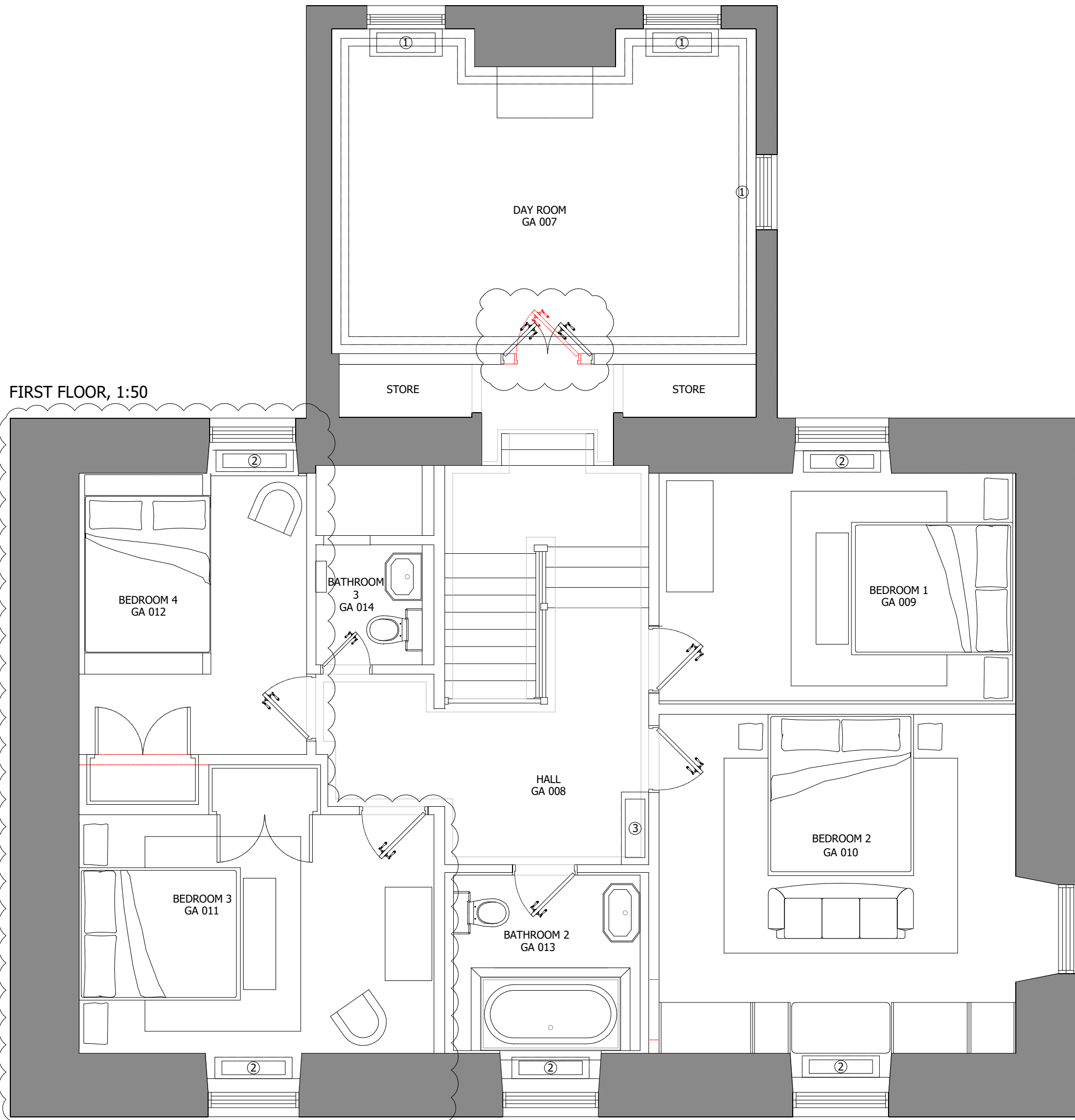
TO BE READ IN CONJUNCTION WITH SMALL POWER AND LIGHTING LAYOUTS, FLOOR FINISHES LAYOUTS, WALL FINISHES LAYOUTS AND RELEVANT DETAILS.

ALL EXISTING RADIATORS REPLACED AS PER PLUMBERS SCHEDULE

HAN103 WALL STAYS

REPLACEMENT DOORS TO VISUALLY MATCH EXISTING DOOR FROM MAIN HALL AT GROUND FLOOR.

FIRST FLOOR, 1:50



INFORMATION GA 002 A

ALDOURIE CASTLE LIMITED
TIGH NA COILLE
PROPOSED FIRST FLOOR

DRAWN: DATE: SCALE: CHECKED:
AK APR 2022 1:50@A3 RK



WildLand Limited,
Kinrara House, Kinrara,
Aviemore PH22 1QA

Drawings to be read in conjunction with all other General Arrangement drawings, specifications, Structural, Mechanical & Electrical Engineer drawings. Drawings not to be scaled. The accuracy of electronic copies is unwarranted by Wildland Ltd.